

AIRVERSA

SCENTA Nebulizing Aroma Diffuser



User Manual

1 Overview

Thank you for choosing our waterless essential oil aroma diffuser. With the latest cold diffusion technology, it converts essential oil into nano vapor to approximately 1-3 microns without using heat or water. The diffusing process does not damage the molecular structure, therefore maintaining its therapeutic properties for easier absorption into the body. **It is easier, more hygienic and safer.** We make it compact enough for you to fit it into your car cup holders so that you may take it with you wherever you go.

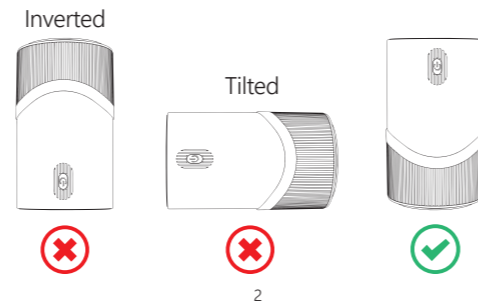
As it is compatible with the majority of essential oil bottles available, it gives you the freedom to choose from a wide range of fragrances that soothe you, relax you, or refresh you in a variety of situations. Using it with sanitizing essential oils can improve unpleasant odors and help purify the air around it.

1

2 Cautions

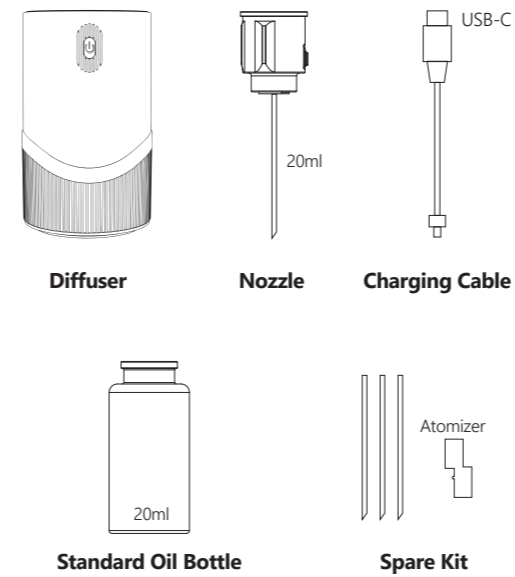


- **DO NOT** invert or tilt the device once the oil bottle is installed.
- **DO NOT** use it with camphor tree, eaglewood and dried orange peel oils.
- **DO NOT** attempt to disassemble the device.
- For more quiet use, ensure the unit is **3 feet away**.
- Keep the device away from children and pets.
- The more concentrated the oil, the less diffusing capability.
- If you do not plan to use this device for an extended period of time, please store the device and the nozzle separately.
- Working Temperature: **4°-104°F / 0 - 40°C**
- Suggested room size: **300-500 sq. ft.**



2

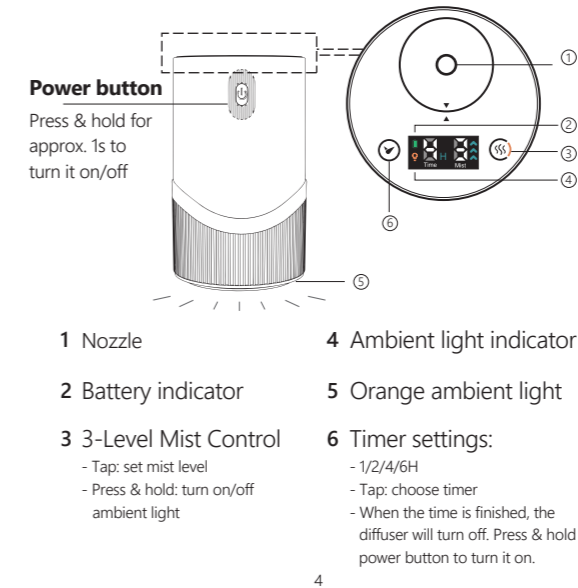
3 What's in the Box



3

4 Touch Button and Info Display

- The display will turn off after 30s if no buttons are touched. You may tap any button to wake up the display.



4

Mist Level Explained

- Level 1**
15 seconds of diffusing, then a pause of 165s
- Level 2**
1 minute of diffusing, then a pause for 2 min
- Level 3**
2 minutes of diffusing, then a pause for 1 min
- Ambient light on
- Battery running normally**
Stays green
- Low battery alert**
Blinks 10 times and then shuts down

5

CUSTOMER SUPPORT

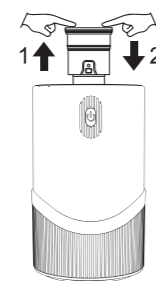
✉ support@airversa.com

🌐 www.airversa.com

If you have any questions or concerns about your new product, please feel free to contact our Customer Service Team.

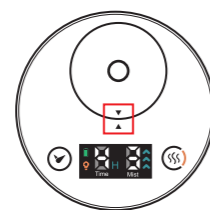
5 Bottle Installation

- This device is compatible with 5/10/15/20ml bottles.



Removal:

Push from the top and lift your finger until you hear a "tick" sound. The nozzle will stick out. You may simply pull it out to change / install a bottle of essential oil.



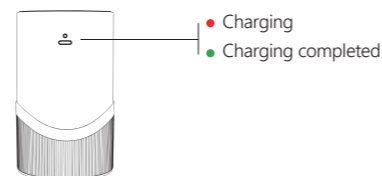
Installation:

Screw the bottle to the nozzle, and then push the nozzle until you hear a "tick" sound. In order to install properly, look for the "▲▼" sign before you push the nozzle.

6

6 Charging

- ▢ Normal charging time: 3-5 hours. If the charging current is below 1A, it will take longer to fully charge the device.
- ⚡ Fully charge this diffuser before using it the first time.
- As charging cycles increase, battery life will decrease.

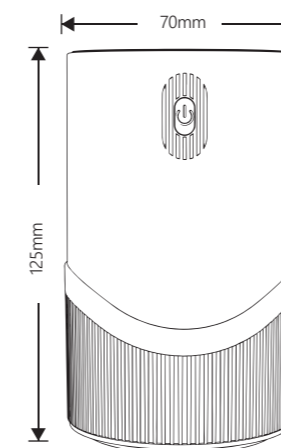


- You may charge from a 5V adapter, PC/MAC USB port, or USB interface within your vehicle. Please ensure the use of safety-certified charging accessories.



7

7 Specifications



Max. Oil Capacity: 20ml Size: 70*125mm
 Input: DC-5V/1A Battery Capacity: 2000mAh
 Rated Power: 1.5W Net Weight: 300g

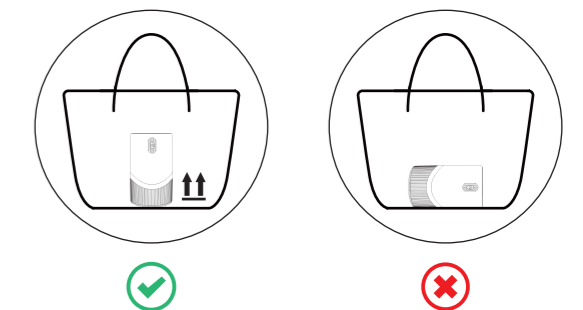
8

8 FAQ

- Q1: How to select the right essential oil?**
Use 100% pure essential oils. Resin and thick oil are not recommended. Camphor tree, eaglewood and dried orange peel oils are prohibited.
- Q2: When I change to a new oil, there is mixed smell coming from my previous oil. How do I clean the nozzle and the bottle?**
Fill the empty bottle with 5ml of 99% ethyl/ethanol alcohol. Shake to fully rinse the inner surface of the bottle and then empty it. Refill with another 5ml of ethyl/ethanol alcohol, and then run the device until the alcohol runs out.
- Q3: I feel like it stops running sometimes, what has happened?**
Please refer to section 4 for 'mist level explained'. The device is able to automatically optimize atomizing/pausing according to mist level.
- Q4: How long does it take to fully charge the device?**
Normally 3-5 hours.

9

9 Warning



Improper placement of the diffuser when an essential oil bottle is installed might cause oil leakage (eg. when the unit is tilted at an angle).

10